

WGS 84 POSITIONS can be plotted directly on this chart

© Copyright 2024. All rights reserved. No part of this product may be reproduced in any form (including photocopying or by electronic means) without prior permission.

RIVER HUMBER HESSLE SAND

DEPTHS IN METRES

SCALE 1 : 10000

SURVEYED BY

Harbour Master, Humber

ASSOCIATED BRITISH PORTS

2nd and 3rd April 2024

Depths are in metres and decimetres reduced to the chart datum given below
Underlined figures are drying heights in metres and decimetres above chart datum
Overhead clearance heights are above Highest Astronomical Tide

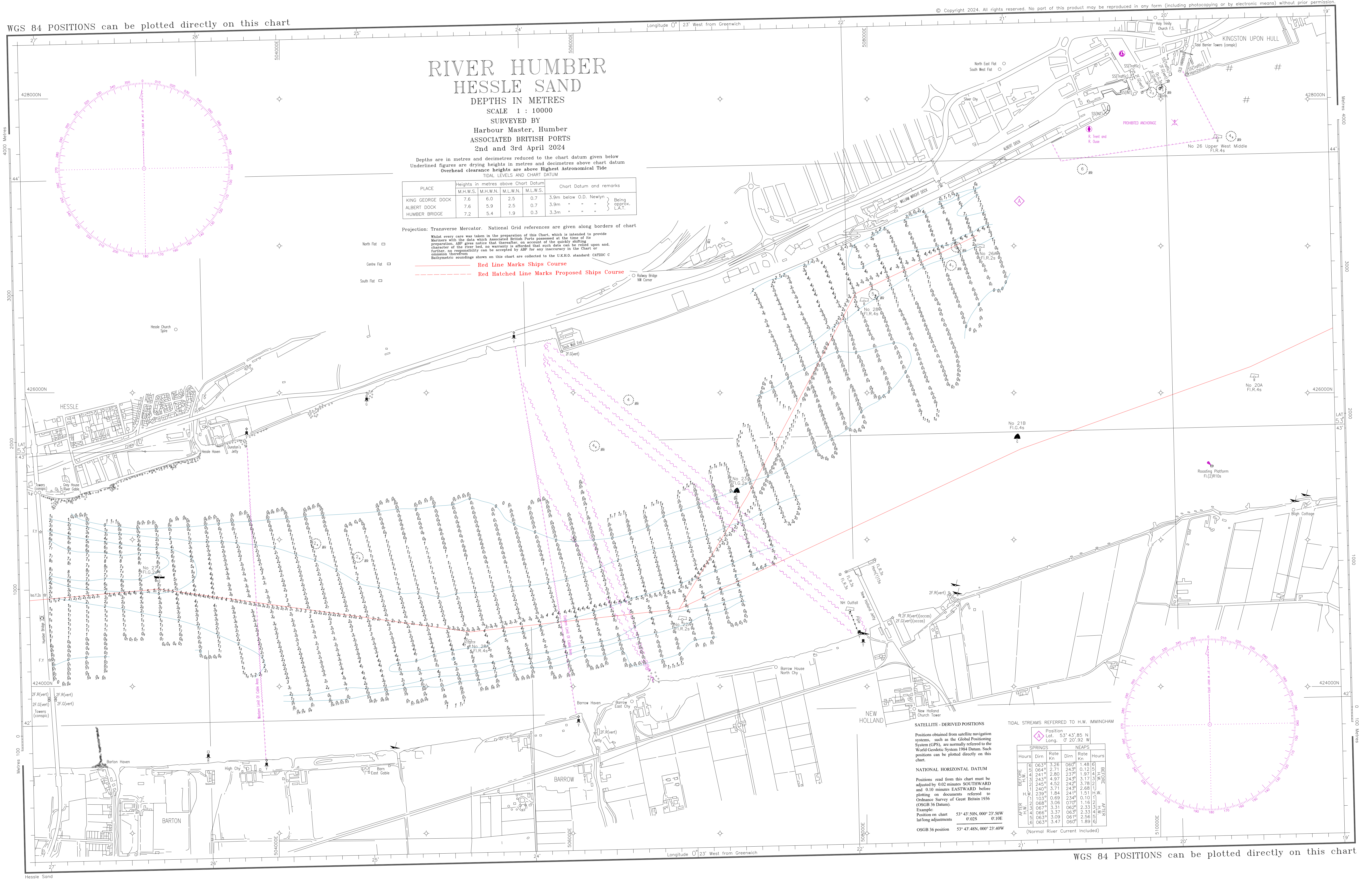
PLACE	Heights in metres above Chart Datum				Chart Datum and remarks
	M.H.W.S.	M.H.N.L.	M.L.W.N.	M.L.W.S.	
KING GEORGE DOCK	7.6	6.0	2.5	0.7	3.9m below O.D. Newlyn
ALBERT DOCK	7.6	5.9	2.5	0.7	3.9m - - - - - Being approx. L.A.T.
HUMBER BRIDGE	7.2	5.4	1.9	0.3	3.3m - - - - -

Projection: Transverse Mercator. National Grid references are given along borders of chart

Whilst every care was taken in the preparation of this Chart, which is intended to provide Mariners with the data which Associated British Ports possessed at the time of its preparation, ABP gives notice that, thereafter, on account of the quickly shifting character of the river bed, no warranty is afforded that such data can be relied upon and, further, no responsibility can be accepted by ABP for any inaccuracies in the Chart or omission therefrom.

Red Line Marks Ships Course
Red Hatched Line Marks Proposed Ships Course

- North Fid
- Centre Fid
- South Fid



SATELLITE-DERIVED POSITIONS
Positions obtained from satellite navigation systems, such as the Global Positioning System (GPS), are normally referred to the World Geodetic System 1984 Datum. Such positions can be plotted directly on this chart.

NATIONAL HORIZONTAL DATUM
Positions read from this chart must be adjusted by 0.02 minutes SOUTHWARD and 0.10 minutes EASTWARD before plotting on documents referred to Ordnance Survey of Great Britain 1936 (OSGB 36 Datum).
Example:
Position on chart 53° 43' 50N, 009° 23' 50W
lat/long adjustments 0.02S 0.10E
OSGB 36 position 53° 43' 48N, 009° 23' 40W

TIDAL STREAMS REFERRED TO H.W. IMMINGHAM

BEFORE H.W.	SPRINGS		NEAPS		AFTER H.W.
	Dirn	Rate kn	Dirn	Rate kn	
0	063°	3.76	060°	1.48	0
1	064°	2.71	243°	0.12	0
2	241°	2.80	237°	1.97	0
3	243°	4.97	243°	3.17	0
4	245°	4.52	242°	3.78	0
5	240°	3.71	243°	2.68	0
6	239°	1.84	243°	1.51	0
7	103°	0.69	234°	0.10	0
8	068°	3.08	070°	1.16	0
9	067°	3.31	062°	2.33	0
10	066°	3.37	063°	2.33	0
11	063°	3.09	061°	2.56	0
12	063°	3.47	060°	1.89	0

(Normal River Current Included)

WGS 84 POSITIONS can be plotted directly on this chart

WGS 84 POSITIONS can be plotted directly on this chart